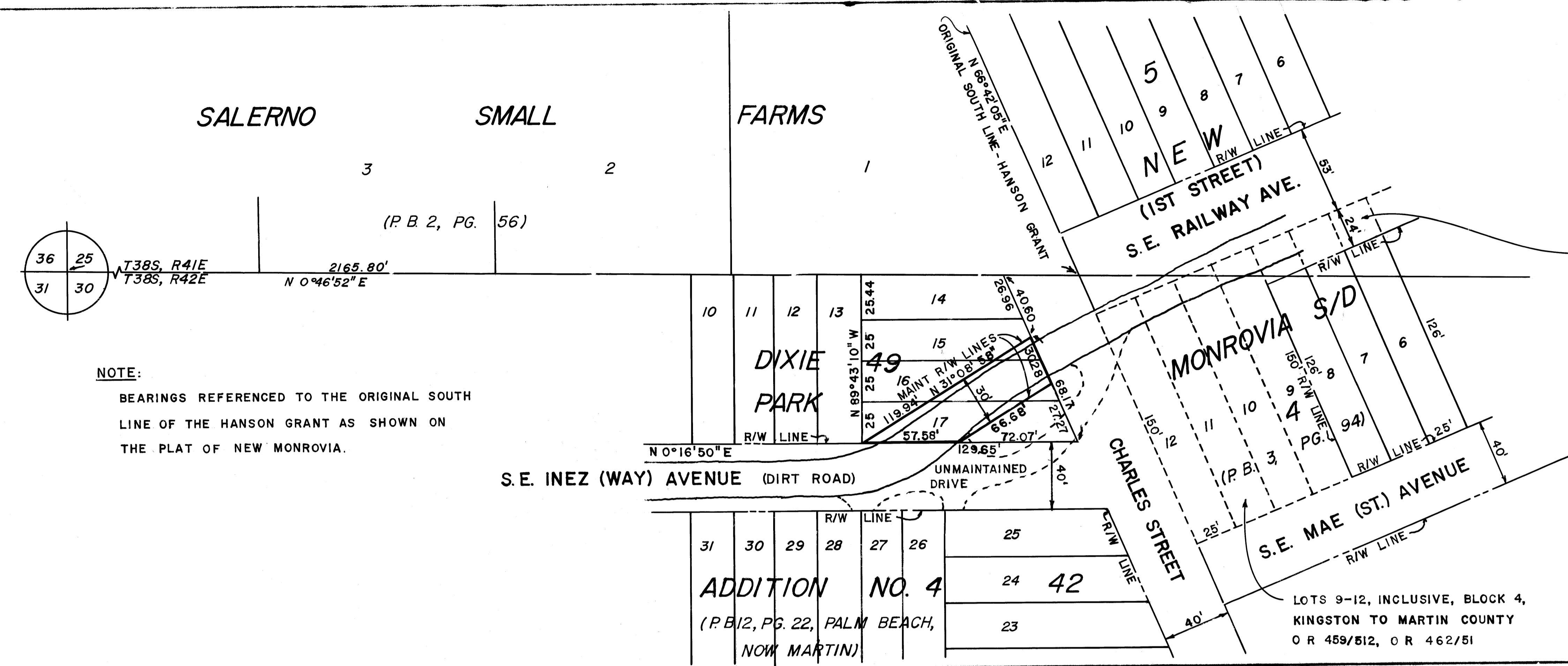


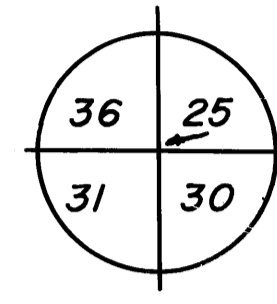
LOUISE V. ISAACS  
CLERK OF CIRCUIT COURT  
BY \_\_\_\_\_ D.C.

NORTH - SCALE 1"=40'



WEST 24' OF LOTS 1-8, INCLUSIVE, BLOCK 4  
SIMMONS TO MARTIN COUNTY  
O R 459/513, O R 462/51

LOTS 9-12, INCLUSIVE, BLOCK 4,  
KINGSTON TO MARTIN COUNTY  
O R 459/512, O R 462/51



NOTE:  
BEARINGS REFERENCED TO THE ORIGINAL SOUTH  
LINE OF THE HANSON GRANT AS SHOWN ON  
THE PLAT OF NEW MONROVIA.

AFFIDAVIT

STATE OF FLORIDA  
COUNTY OF MARTIN

BEFORE ME, THE UNDERSIGNED AUTHORITY, DULY AUTHORIZED IN THE STATE AND COUNTY  
AFORESAID TO ADMINISTER OATHS AND TAKE ACKNOWLEDGMENTS, PERSONALLY APPEARED C. E. RAULERSON,  
AS ROAD SUPERINTENDENT, WHO, AFTER BEING DULY SWORN, DEPOSES AND SAYS ON OATH  
AS FOLLOWS:

1. I, THE UNDERSIGNED, BEING COUNTY ROAD SUPERINTENDENT OF MARTIN COUNTY,  
FLORIDA, AND AS SUCH A DULY QUALIFIED EMPLOYEE OF SAID MARTIN COUNTY, DO AVER THAT  
I AM THOROUGHLY FAMILIAR WITH ALL OF THE ROADS IN MARTIN COUNTY, FLORIDA AND WITH  
THE PROGRAM OF MAINTENANCE AND IMPROVEMENT THEREOF. THAT I HAVE BEEN ASSOCIATED  
IN PRESENT OR SIMILAR CAPACITY ON ROAD PROGRAMS IN SAID COUNTY FOR A PERIOD IN  
EXCESS OF 20 YEARS.

2. THAT TO MY PERSONAL KNOWLEDGE AND OBSERVATION THE ROAD KNOWN AND DESCRIBED  
AS S. E. INEZ AVENUE, ALL WITHIN  
MARTIN COUNTY AS LOCATED AS SHOWN ON THE ABOVE MAP WAS CONSTRUCTED BY AND HAS BEEN  
MAINTAINED AND REPAIRED CONTINUOUSLY AND UNINTERRUPTED FOR 15 YEARS BY THE  
MARTIN COUNTY ROAD AND BRIDGE DEPARTMENT. FURTHER THAT THE MAINTENANCE OF SAID  
PORTION OF S. E. INEZ AVENUE CONSISTS OF MOWING, PERIODIC GRADING AND  
REPLACING OF MARL BASE MATERIAL.

FURTHER AFFIANT SAYETH NOT.  
THIS 10TH DAY OF SEPTEMBER, 1979.

C. E. Raulerson  
ROAD SUPERINTENDENT

SWORN TO AND SUBSCRIBED BEFORE ME THIS 10TH DAY OF SEPTEMBER, 1979 BY  
C. E. RAULERSON AS SUPERINTENDENT, AT STUART, MARTIN COUNTY, FLORIDA.  
WITNESS MY HAND AND OFFICIAL SEAL IN THE COUNTY AND STATE LAST  
AFORESAID THIS 10TH DAY OF SEPTEMBER, 1979.

Caroline C. Best  
NOTARY PUBLIC, STATE OF FLORIDA AT LARGE  
MY COMMISSION EXPIRES: August 5, 1980

PURSUANT TO SECTION 95.36(1), FLORIDA STATUTES, (1977) THE PORTIONS OF  
S. E. INEZ AVENUE, ALL WITHIN  
MARTIN COUNTY AND LOCATED AS SHOWN ON THE ABOVE MAP, SHALL HEREAFTER BE  
DEEMED DEDICATED TO THE PUBLIC AND ALL RIGHT, TITLE, EASEMENTS AND APPURTENANCES  
ARE HEREBY VESTED IN MARTIN COUNTY, FLORIDA.

CERTIFIED BY: BOARD OF COUNTY COMMISSIONERS

Louise V. Isaacs  
LOUISE V. ISAACS, CLERK  
By Charlotte Burkey D.C.

BY: Frank A. Wacha  
FRANK A. WACHA, CHAIRMAN

ACCEPTED FOR FILES AND RECORDED IN THE  
PUBLIC RECORDS OF MARTIN COUNTY, FLORIDA.  
THIS 11th DAY OF September, A. D. 1979. IN  
PLAT BOOK 2 PAGE 95.

Louise V. Isaacs  
CLERK OF CIRCUIT COURT OF MARTIN COUNTY, FLORIDA  
By Charlotte Burkey D.C.  
File # 352698

MARTIN COUNTY, FLORIDA				
ENGINEERING DEPARTMENT				
<b>MAINTENANCE MAP</b>				
S. E. INEZ AVENUE MARTIN COUNTY				
DRAWN	BY	DATE	APPROVED BY	DATE
	KFC	8-25-79	<u>E. J. Brennan</u>	
CHECKED			COUNTY ENGINEER	
INDEXED				8/31/79